



*Knit Baby Lucy Add On*  
NB-24m Beginner

FEATURING



## Size Charts

### Simple Life Pattern Co

	<b>NB</b>	<b>0-3 m</b>	<b>3-6 m</b>	<b>6-9 m</b>	<b>9-12 m</b>	<b>12-18 m</b>	<b>18-24 m</b>
<b>Chest</b>	12"	14"	16"	17"	18"	19"	20"
<b>Weight</b>	5-8 lbs	8-12 lbs	12-16 lbs	16-20 lbs	20-24 lbs	24-26 lbs	26-39 lbs
<b>Height</b>	18"-21"	21"-24"	24"-26"	26"-28"	28"-30"	30"-32"	32"-34"
<b>Waist</b>	13"	15"	16"	16.5"	17"	18"	19"

## Fabric Requirements

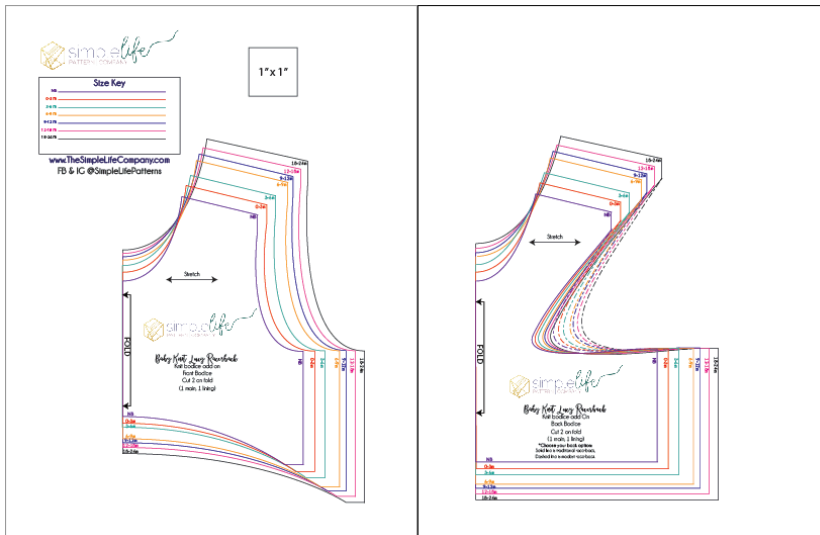
(Yards – based on 44/45" fabric)

<b>Size</b>	<b>Bodice &amp; Lining</b>
<b>NB</b>	1/4
<b>0-3 m</b>	3/8
<b>3-6 m</b>	3/8
<b>6-9 m</b>	3/8
<b>9-12 m</b>	3/8
<b>12-18 m</b>	3/4
<b>18-24 m</b>	3/4

### Tips & Notes:

- Please read through the entire pattern before beginning.
- All seam allowances are 3/8", unless otherwise stated.
- Finish your seams with a serger or zig zag stitch to prevent fraying. Since the top is fully lined, the top seams do not need to be finished with a serger or zig zag stitch.
- For a professional look, press your garment when instructed. This helps keep the seams flat and even.
- When printing your pattern pieces, make sure "Auto rotate and center" in NOT ticked and scaling is set to "None".
- You do not need to print the entire pattern, you can print the pattern pieces then follow the tutorial on your computer.
- Once you print your pattern pieces, match up the circles, tape then cut out the pieces. You can then cut the size you want or use freezer paper and trace the size you need so you don't cut into the original pattern, this is helpful and saves paper and ink if you need to make multiple sizes.
- **Fabric Recommendations: Bodice must be knit.** There are many different types of knit. For this pattern, a 4 way knit is best. If you choose to use a 2 way knit, be sure to cut your pattern pieces with the stretch going widthwise. Some things to look for when choosing knit: I prefer a knit that is about 8-9 ounces per yard. Thin knits are harder to work with and don't have good recovery; avoid those. Choose a knit that is at least 50% stretch, but no more than 75%. To determine the stretch percentage, take 4" of knit and stretch it, each inch past the 4 inches is 25%. Example: Art Gallery Fabrics knit is a 4 way stretch, 95% cotton with 5% spandex & is about 9 ounces. If you take 4 inches and stretch it, it will stretch an additional 3", therefore 75%.
- **Working with knit:** Prewashing knit is recommended. Knit tends to shrink. Use a ballpoint needle to avoid tearing your knit. To avoid stretching while sewing, increase your stitch length to about 3.5 and your tension should be about 4.2. Each sewing machine will vary so play around on scrap fabric until you achieve your desired look. Knit does not ravel, therefore there is no need to finish your seams. However, if you prefer a professional, polished look, serge the raw edge before doing your hems. Any seam that will require stretch (neck binding, sleeve hems...) you will need to use a stretch stitch. Refer to your machines manual to see what options your specific machine has. I use the triple stretch stitch. The image to the left is what the triple stretch stitch option will look like.
- **When sharing your creations use: #SLPco, #SLPcoLucy, #SLPcoKnit & #SLPcoAddOn so that everyone can search your creations for inspiration. If you want to see other people's creation, then search for these hashtags on your favorite social media sites.**


## Cutting out your pattern pieces



Print your pattern pieces and tape them together. Here is the layout. Once you print your pattern pieces, overlap the lines so they are on top of each other, along with matching up the circles. US letter pages overlap exactly 1 inch and the circles are 1 inch in diameter. Tape the pieces and then cut them out.

**This pattern is layered. You can print only the size you want but be sure you click the 1<sup>st</sup> layer that says, "Must print – text" plus the size layer(s) that you want.**

To view the blog post on how to print layers, click this link:

<http://thesimplelifecompany.com/blog/tutorial-for-layered-patterns/>



**Step 1:** Lay your front bodice piece on the center front fold line along your fabric fold. Cut around the bodice piece. Repeat with the back bodice piece and both lining pieces.

## Knit Baby Lucy's Racerback Add On



**Step 1:** Lay your front main bodice on top of your back main bodice right sides together, matching up the shoulder seams. Sew the shoulder seams. Repeat with your lining pieces.



**Step 2:** Lay your main bodice pieces right side up. Lay your lining bodice pieces on top of the main, right sides together, matching all the edges. Sew along the neck circle. Clip your curves. Turn right side out through the neck hole and press.



**Step 3:** Separate the main and lining fabrics by flipping the lining towards the neckline. Take the other side bodice piece and roll the main and lining down, roll it to the other shoulder seam that we separated.



Here is another picture of the bodice being rolled to the shoulder seam. Once you have your roll, the part that you separated will be on both sides (the lining on the top and the main fabric on the bottom as shown.)



**Step 4:** You will now take the main piece on the top and fold it over the rolled fabric and on to the lining fabric, matching up the armhole curve and sides.



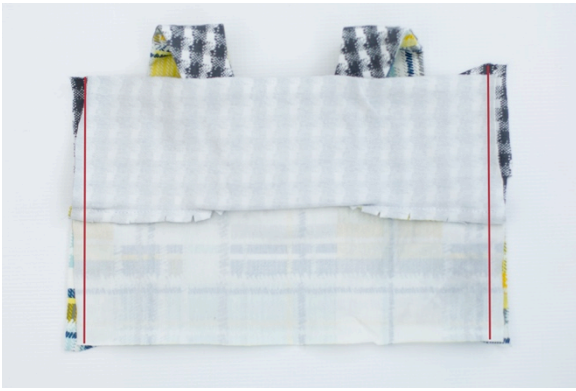
**Step 5:** Pin along the armhole curve and sew in place. Clip your curves.



**Step 6:** Separate the lining and main fabrics. Begin to gently pull on the shoulder piece through the front bodice to pull it right sides out. Keep pulling until your bodice is right sides out. Repeat steps 3-5 with the other armhole.



**Step 7:** Lay your bodice with the main fabric right sides up. Take and separate your bodice fabric and lining fabric on the front so your main fabric and lining are lying as flat as possible. Take the back bodice pieces and separate the main fabric from the lining. Bring the back piece and lay it on top of the front with right sides together, matching up the side seams where the main fabric and lining fabric meet. Pin down the side seams.



**Step 8:** Sew down both sides. Turn your bodice right side out and press.

You will not add a placket to the back of your skirt. Instead, sew your two skirt pieces together along the side seams and hem according to the original pattern. Do a gathering stitch at the top of your skirt, 1/4" from the raw edge. Gather the skirt to be the same width as the bodice & continue as stated in the woven version pattern.

Pattern cover photo courtesy of Kyla Sorenson of Inspired by Kyla.

Fabric kindly provided by Art Gallery Fabrics. #ArtGalleryFabrics  
#MadPlaidFabrics by AGF Studio



Thread kindly provided by Aurifil Thread.  
#ThreadMatters #AurifilThread



Thank you for purchasing a Simple Life Pattern Co. pattern! To view my blog, see more patterns, shop for fabric, and free tutorials, visit my website at [www.thesimplelifecompany.com](http://www.thesimplelifecompany.com)

I am always working on new patterns, so be sure to check us out on the following social media sites. Join us on Facebook for all the latest patterns, sales, coupons, and to find inspiration for your next project. [www.facebook.com/simplelifepatterns](http://www.facebook.com/simplelifepatterns)  
[www.facebook.com/groups/SLPco](http://www.facebook.com/groups/SLPco)

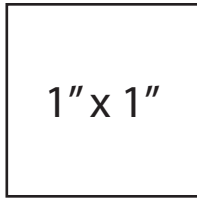
Follow us on Instagram @ SimpleLifePatterns

Follow us on Pinterest @ SLPco

[Lucy's Racerback Tunic and Dress: #SLPco & #SLPcoLucy](#)

This tutorial, pattern pieces, and all of its contents are copyright protected and property of Simple Life Pattern Company, LLC and cannot be reproduced in any way or form. Photocopying, emailing or distributing patterns in any form is illegal and punishable by law. This tutorial is for personal use and small-scale business use. If you choose to sell a product using a Simple Life Pattern Company pattern, please give credit to us where you post photos of the pattern. If you would like to purchase a manufacturing license for this pattern, or have any questions or concerns, please contact Katie Skoog at [Katie@thesimplelifecompany.com](mailto:Katie@thesimplelifecompany.com)





**Size Key**

NB	_____
0-3 m	_____
3-6 m	_____
6-9 m	_____
9-12 m	_____
12-18 m	_____
18-24 m	_____

www.TheSimpleLifeCompany.com  
 FB & IG @SimpleLifePatterns

