

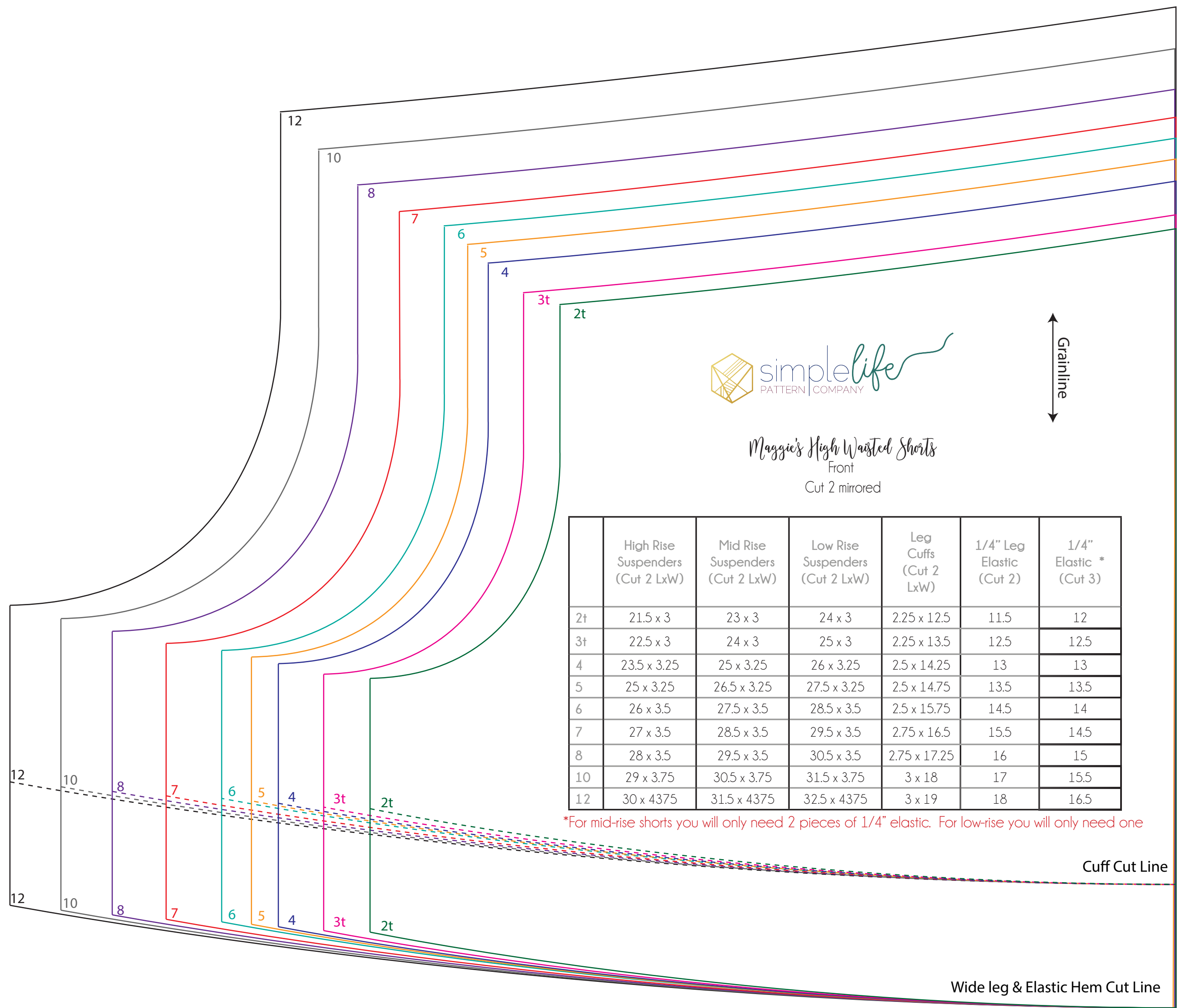
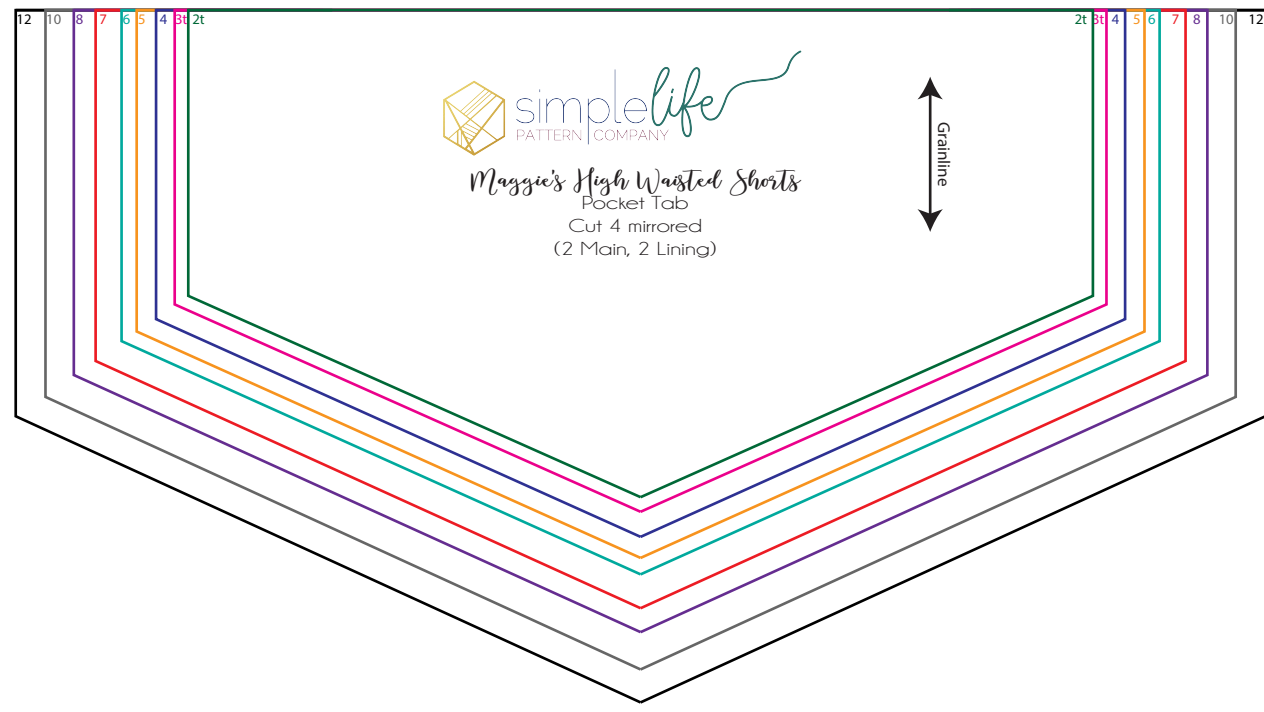


www.TheSimpleLifeCompany.com
 FB & IG @SimpleLifePatterns
 #SLPco & #SLPcoMaggie

1"x1"

Size Key	
2T	—
3T	—
4T	—
5	—
6	—
7	—
8	—
10	—
12	—

This document size is 24" x 36"

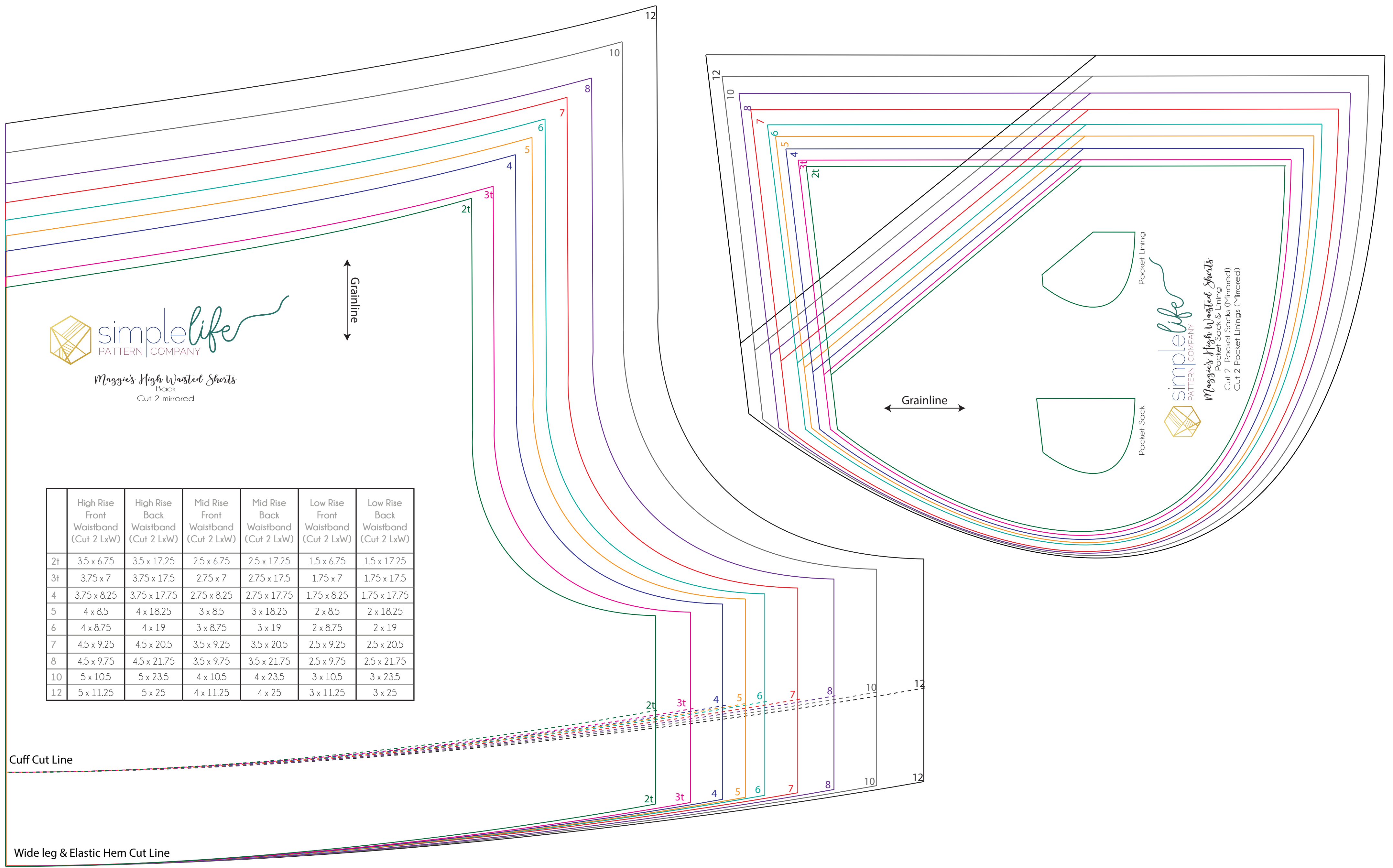


	High Rise Suspensders (Cut 2 LxW)	Mid Rise Suspensders (Cut 2 LxW)	Low Rise Suspensders (Cut 2 LxW)	Leg Cuffs (Cut 2 LxW)	1/4" Leg Elastic (Cut 2)	1/4" Elastic * (Cut 3)
2t	21.5 x 3	23 x 3	24 x 3	22.5 x 12.5	11.5	12
3t	22.5 x 3	24 x 3	25 x 3	22.5 x 13.5	12.5	12.5
4	23.5 x 3.25	25 x 3.25	26 x 3.25	25 x 14.25	13	13
5	25 x 3.25	26.5 x 3.25	27.5 x 3.25	25 x 14.75	13.5	13.5
6	26 x 3.5	27.5 x 3.5	28.5 x 3.5	25 x 15.75	14.5	14
7	27 x 3.5	28.5 x 3.5	29.5 x 3.5	27.5 x 16.5	15.5	14.5
8	28 x 3.5	29.5 x 3.5	30.5 x 3.5	27.5 x 17.25	16	15
10	29 x 3.75	30.5 x 3.75	31.5 x 3.75	3 x 18	17	15.5
12	30 x 4.375	31.5 x 4.375	32.5 x 4.375	3 x 19	18	16.5

*For mid-rise shorts you will only need 2 pieces of 1/4" elastic. For low-rise you will only need one

Cuff Cut Line

Wide leg & Elastic Hem Cut Line



	High Rise Front Waistband (Cut 2 LxW)	High Rise Back Waistband (Cut 2 LxW)	Mid Rise Front Waistband (Cut 2 LxW)	Mid Rise Back Waistband (Cut 2 LxW)	Low Rise Front Waistband (Cut 2 LxW)	Low Rise Back Waistband (Cut 2 LxW)
2t	3.5 x 6.75	3.5 x 17.25	2.5 x 6.75	2.5 x 17.25	1.5 x 6.75	1.5 x 17.25
3t	3.75 x 7	3.75 x 17.5	2.75 x 7	2.75 x 17.5	1.75 x 7	1.75 x 17.5
4	3.75 x 8.25	3.75 x 17.75	2.75 x 8.25	2.75 x 17.75	1.75 x 8.25	1.75 x 17.75
5	4 x 8.5	4 x 18.25	3 x 8.5	3 x 18.25	2 x 8.5	2 x 18.25
6	4 x 8.75	4 x 19	3 x 8.75	3 x 19	2 x 8.75	2 x 19
7	4.5 x 9.25	4.5 x 20.5	3.5 x 9.25	3.5 x 20.5	2.5 x 9.25	2.5 x 20.5
8	4.5 x 9.75	4.5 x 21.75	3.5 x 9.75	3.5 x 21.75	2.5 x 9.75	2.5 x 21.75
10	5 x 10.5	5 x 23.5	4 x 10.5	4 x 23.5	3 x 10.5	3 x 23.5
12	5 x 11.25	5 x 25	4 x 11.25	4 x 25	3 x 11.25	3 x 25

Cuff Cut Line

Wide leg & Elastic Hem Cut Line

