

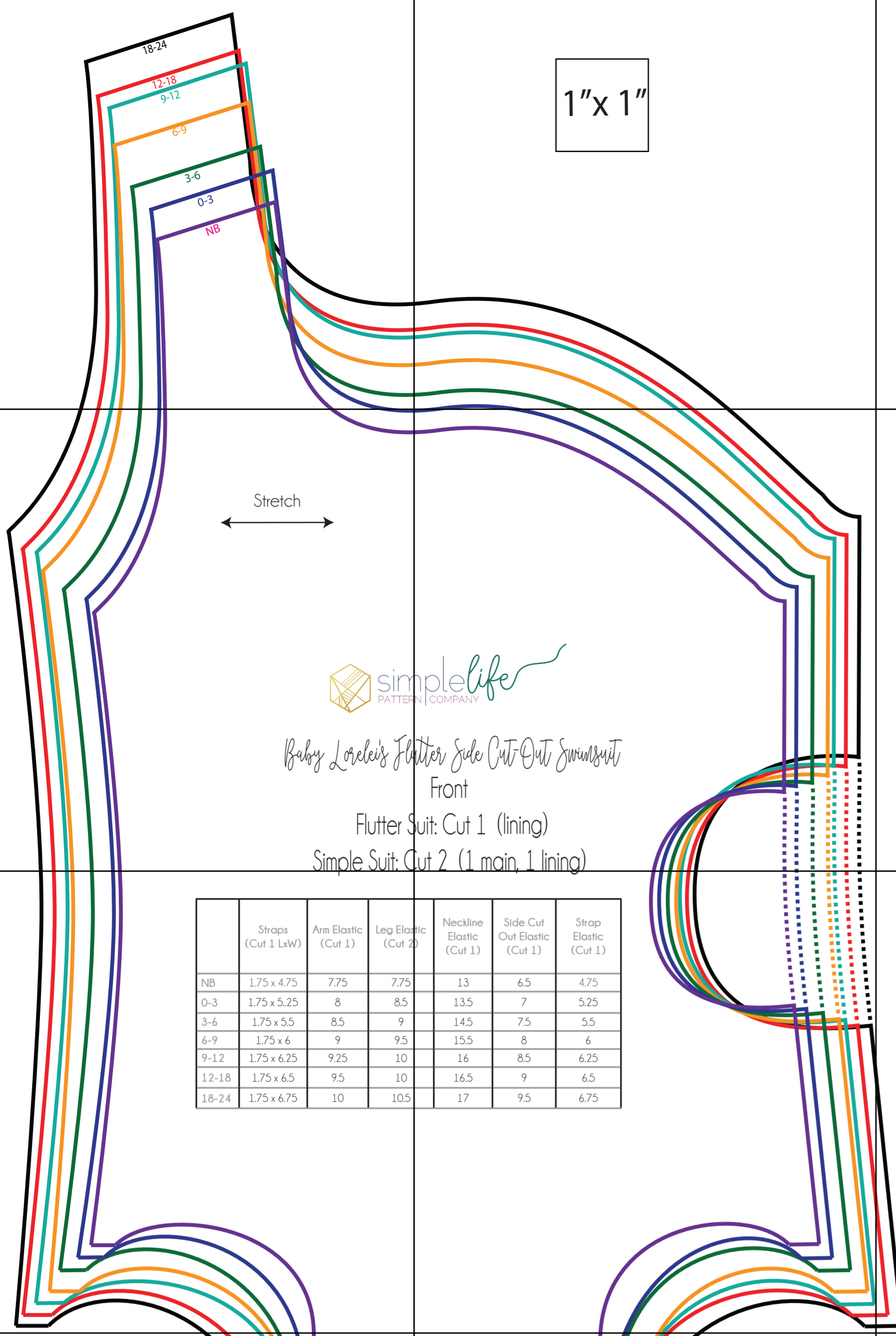


www.TheSimpleLifeCompany.com
FB & IG @SimpleLifePatterns
#SLPco & #SLPcoLorelei #SLPcoBaby

Size Key

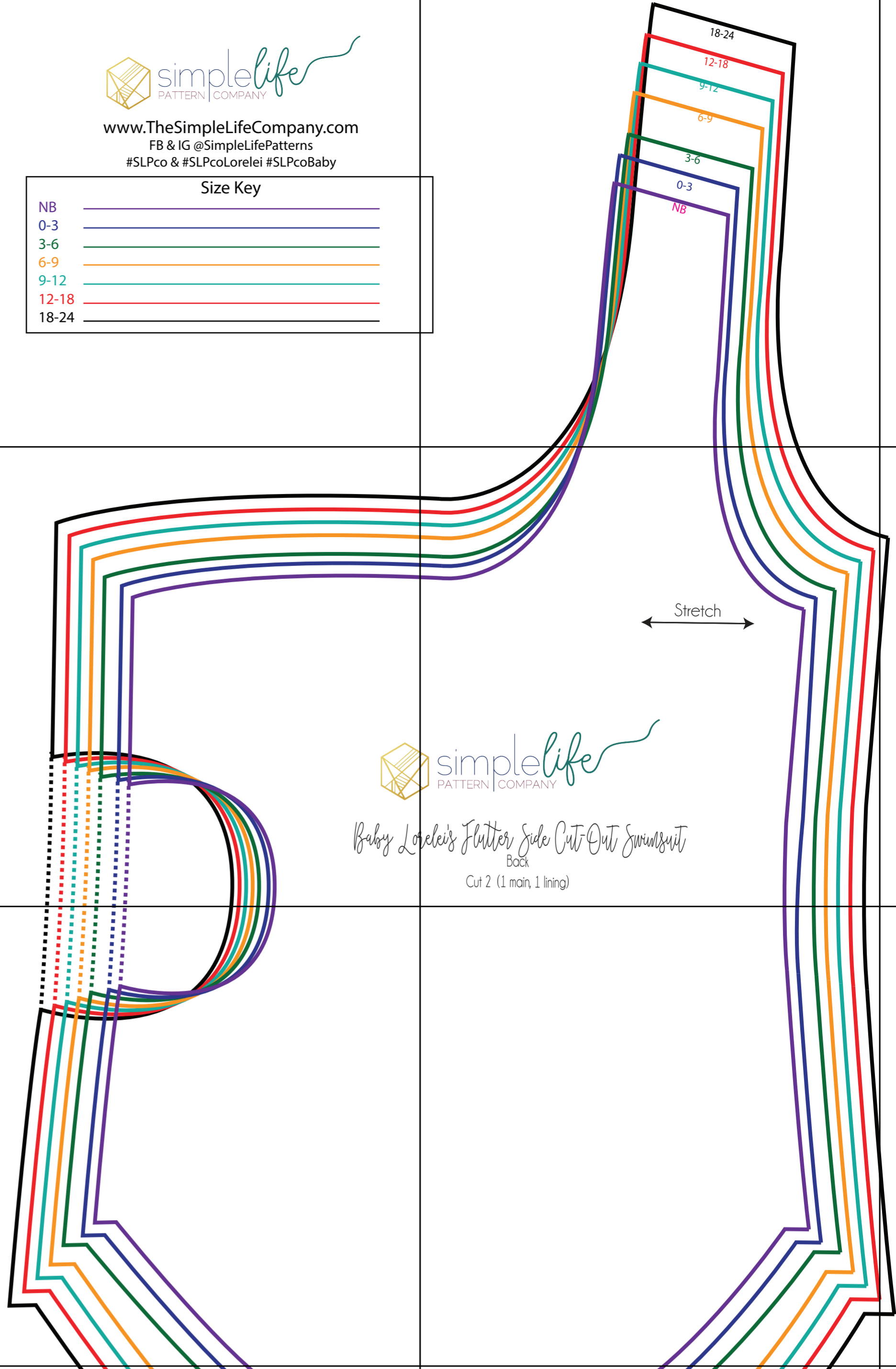
NB	_____
0-3	_____
3-6	_____
6-9	_____
9-12	_____
12-18	_____
18-24	_____

1"x 1"

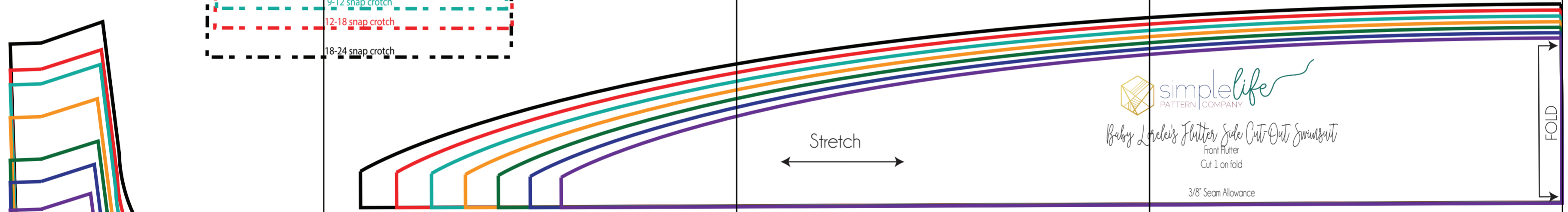
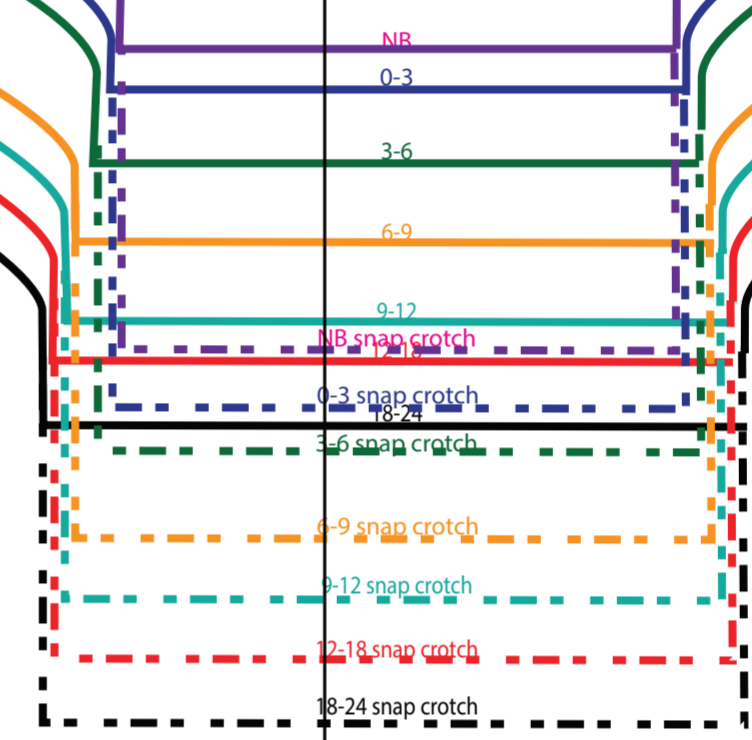
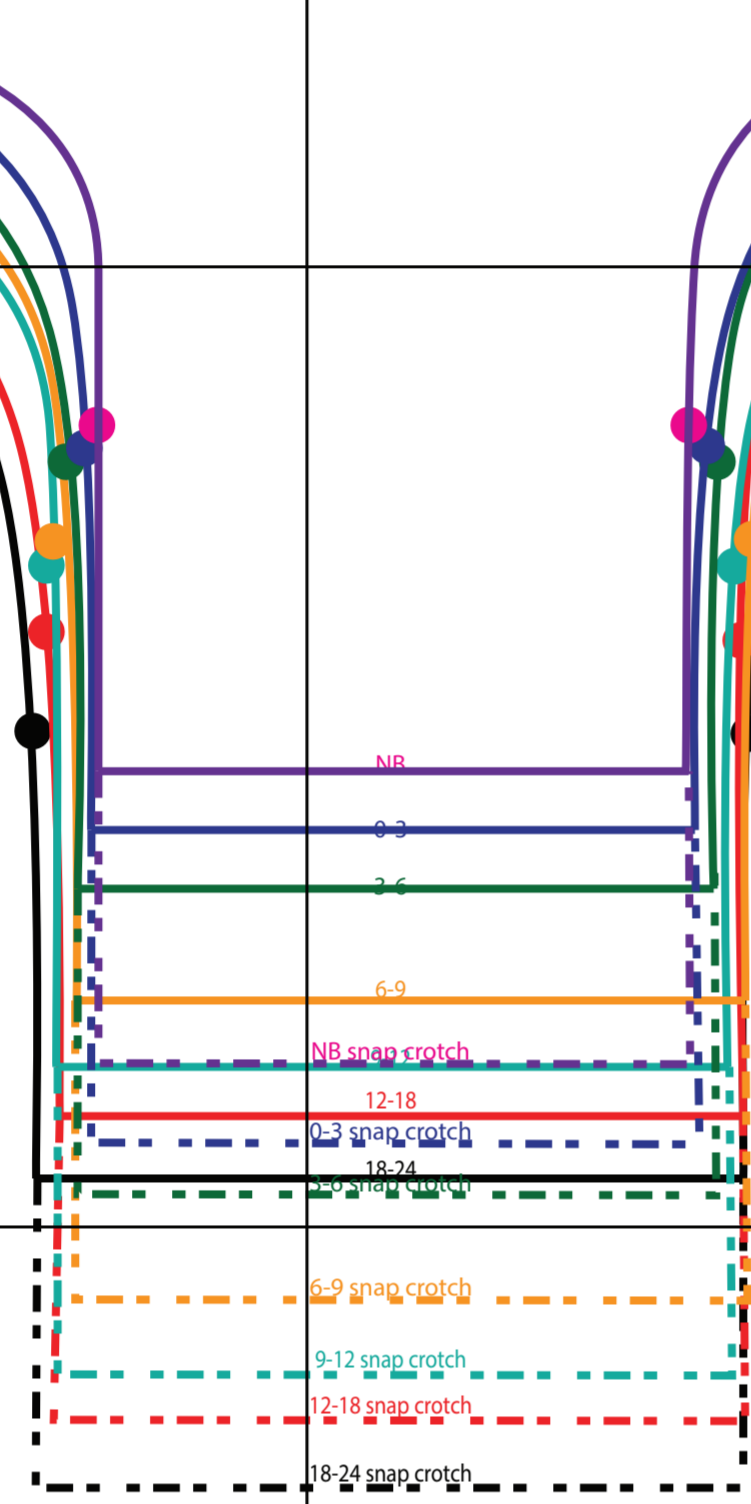


Baby Lorelei's Flutter Side Cut-Out Swimsuit
Front
Flutter Suit: Cut 1 (lining)
Simple Suit: Cut 2 (1 main, 1 lining)

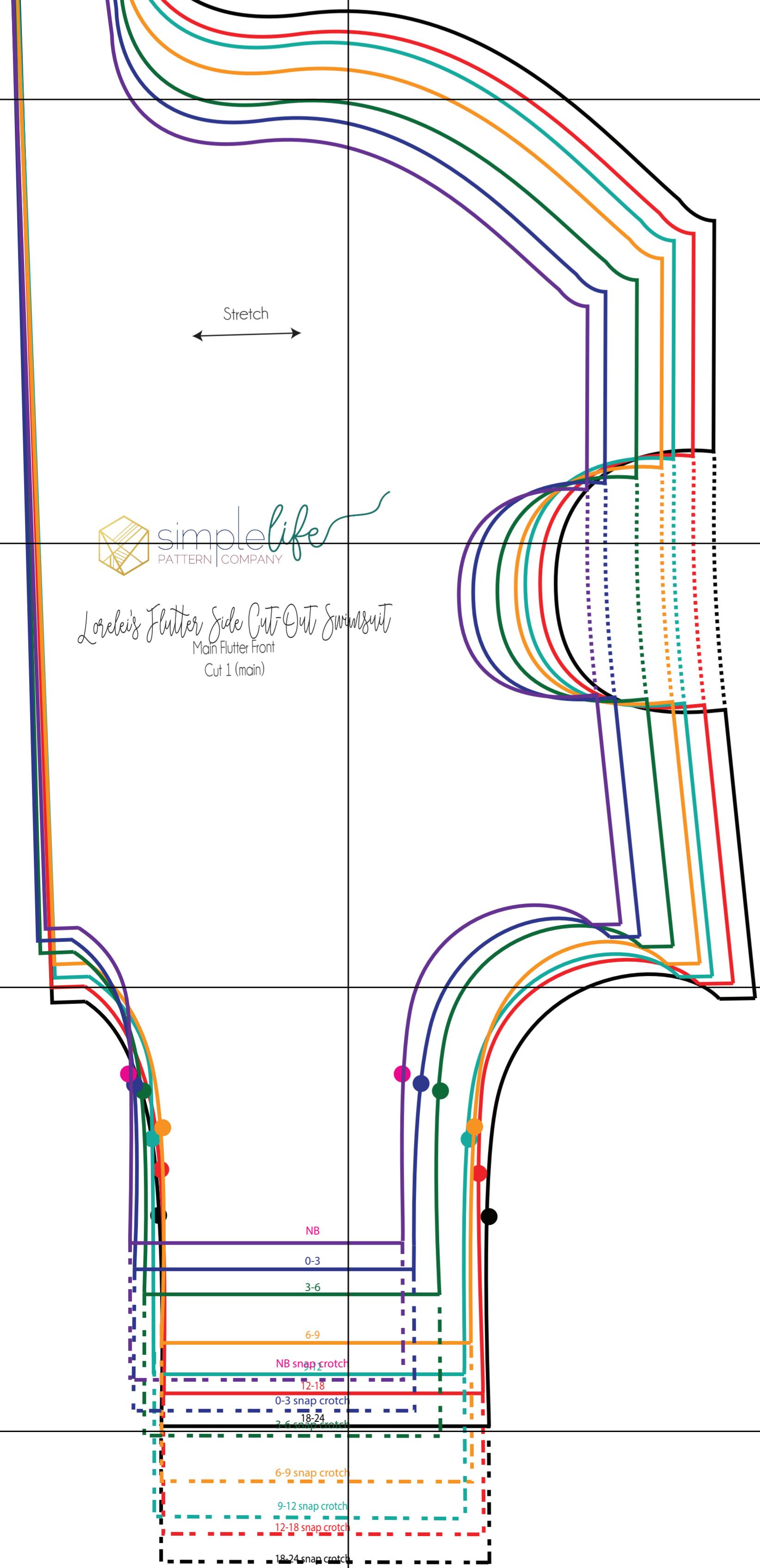
	Straps (Cut 1 L&W)	Arm Elastic (Cut 1)	Leg Elastic (Cut 2)	Neckline Elastic (Cut 1)	Side Cut Cut Elastic (Cut 1)	Strap Elastic (Cut 1)
NB	1.75 x 4.75	7.75	7.75	13	6.5	4.75
0-3	1.75 x 5.25	8	8.5	13.5	7	5.25
3-6	1.75 x 5.5	8.5	9	14.5	7.5	5.5
6-9	1.75 x 6	9	9.5	15.5	8	6
9-12	1.75 x 6.25	9.25	10	16	8.5	6.25
12-18	1.75 x 6.5	9.5	10	16.5	9	6.5
18-24	1.75 x 6.75	10	10.5	17	9.5	6.75



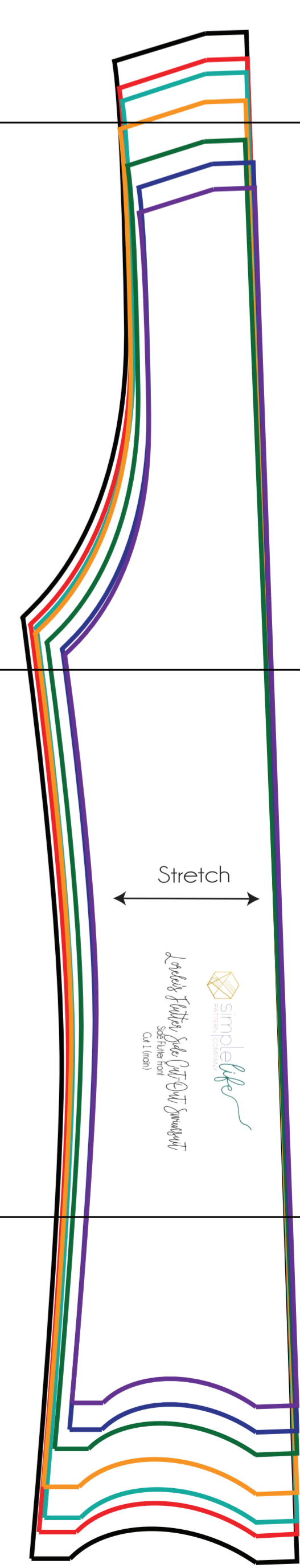
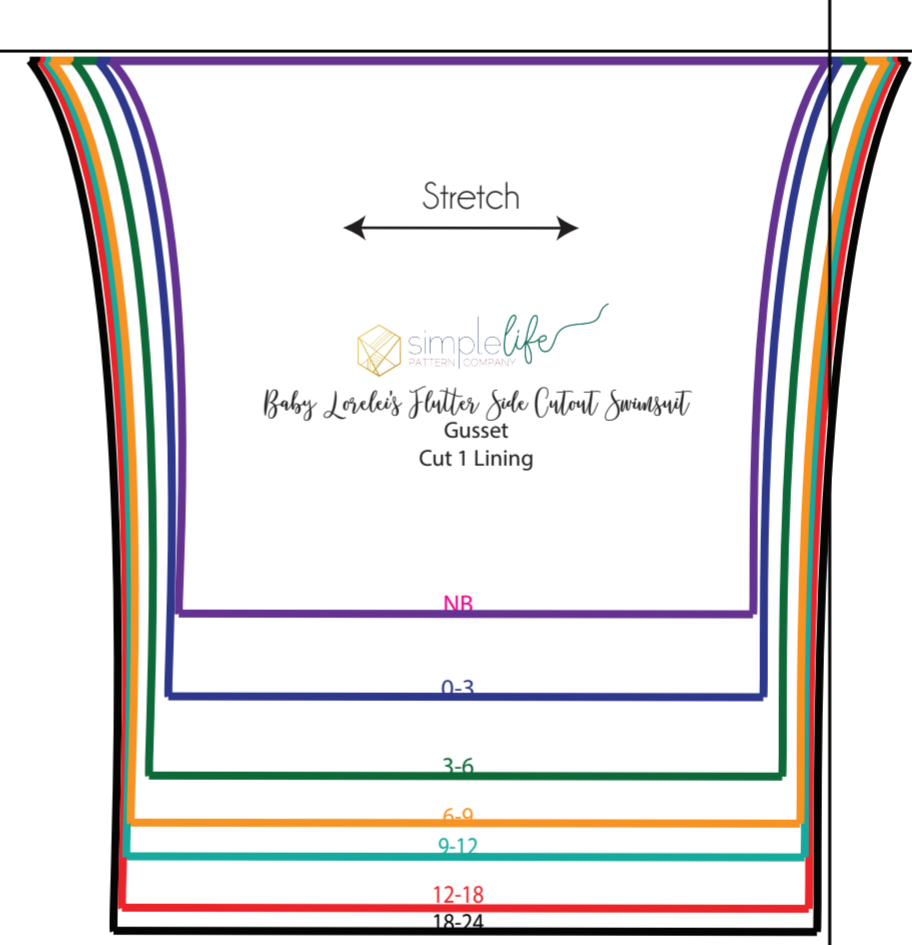
Baby Lorelei's Flutter Side Cut-Out Swimsuit
Back
Cut 2 (1 main, 1 lining)



Baby Lorelei's Flutter Side Cut-Out Swimsuit
Front Gusset
Cut 1 on fold
3/8" Seam Allowance



Lorelei's Flutter Side Cut-Out Swimsuit
Main Flutter front
Cut 1 (main)



Lorelei's Flutter Side Cut-Out Swimsuit
Main Flutter front
Cut 1 (main)